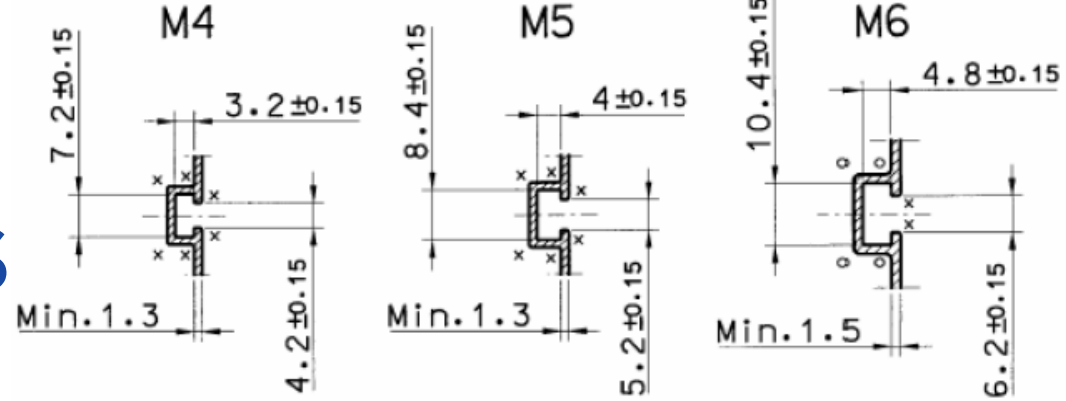
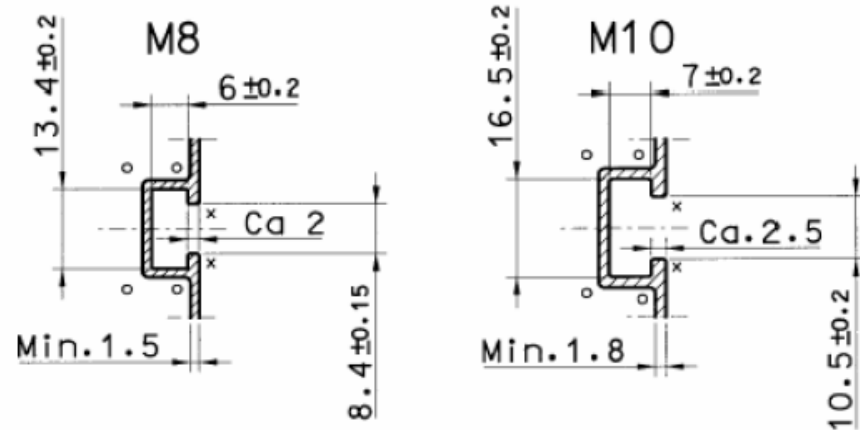


SCREWPOCKETS

For different types of screws and nuts



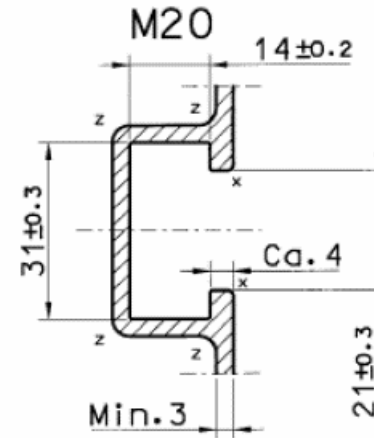
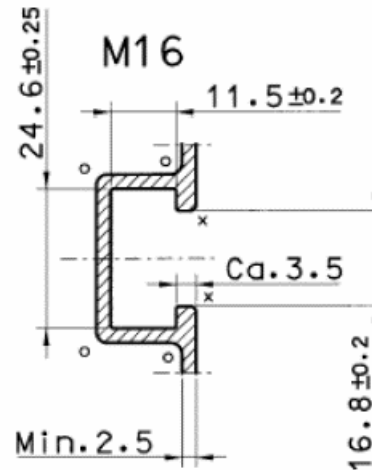
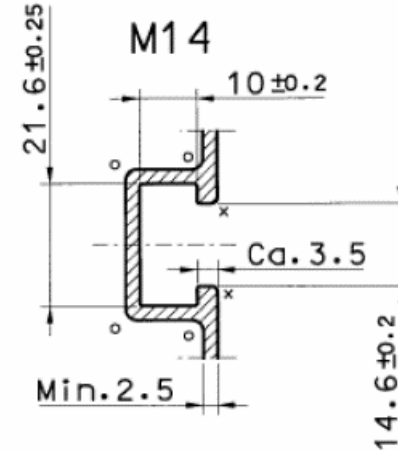
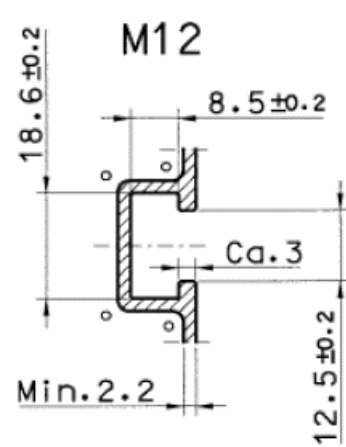
Recommended dimensions for screwpockets that are designed for screws with dimensions and tolerances according to
SS-ISO 4014/4017, DIN ISO 4014/4017



SCREWPOCKETS

For different types of screws and nuts

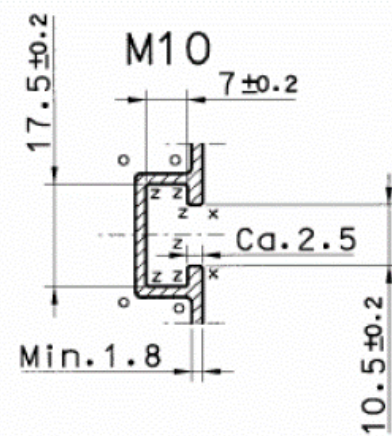
Recommended dimensions for screwpockets that are designed for screws with dimensions and tolerances according to
SS-ISO 4014/4017, DIN ISO 4014/4017



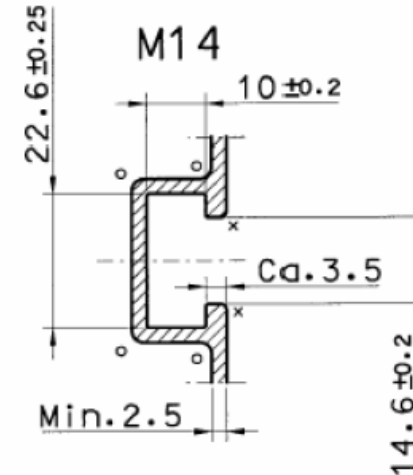
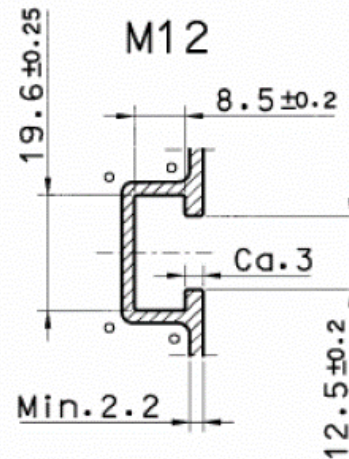
SCREWPOCKETS

For different types of screws and nuts

Recommended dimensions for screwpockets that are designed for screws with dimensions and tolerances according to DIN 931/933



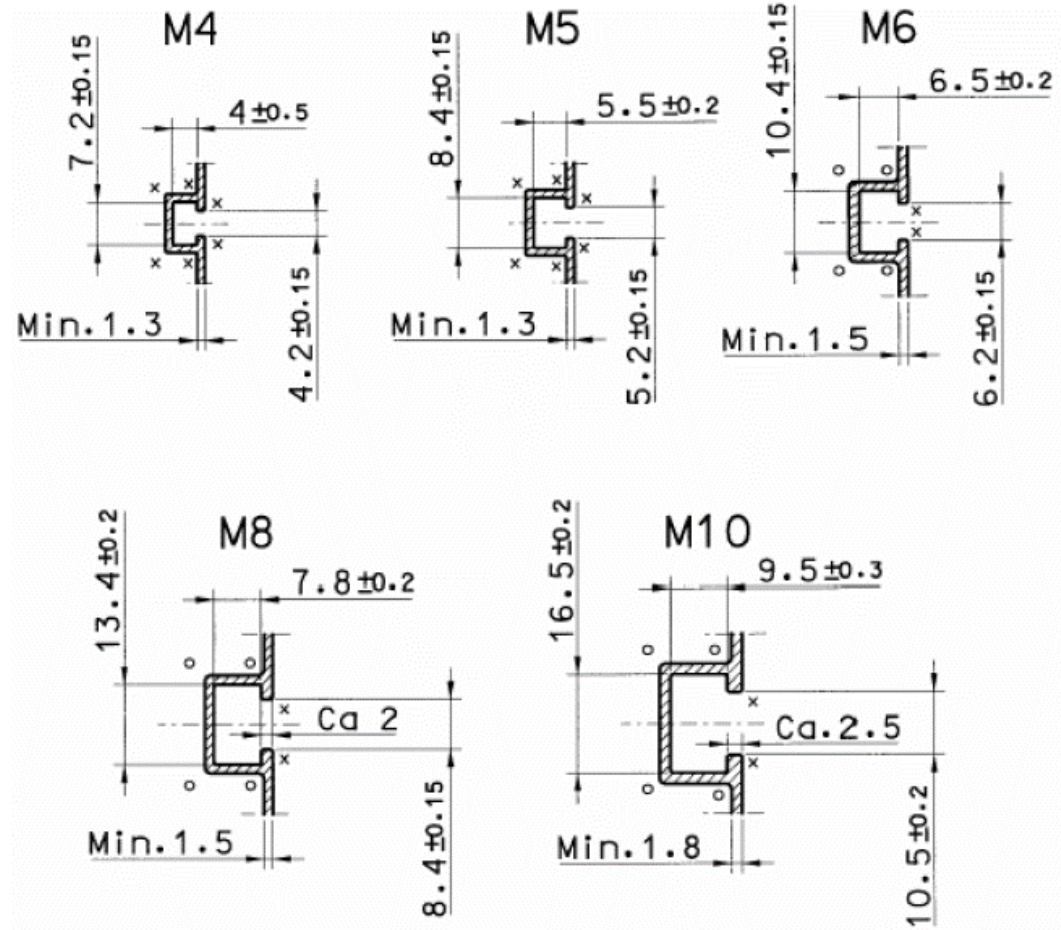
OBS:
These dimensions:
M10, M12 and M14
are different from
DIN ISO 4014/4017



SCREW POCKETS

For different types of screws and nuts

Recommended dimensions for pockets that are designed for nuts with dimensions and tolerances according to SS-ISO 4032, DIN ISO 4032



SCREW POCKETS

For different types of screws and nuts

Recommended dimensions for pockets that are designed for nuts with dimensions and tolerances according to SS-ISO 4032, DIN ISO 4032

